



# Standard Gain Horn

## Standard Gain Horn (SGH)

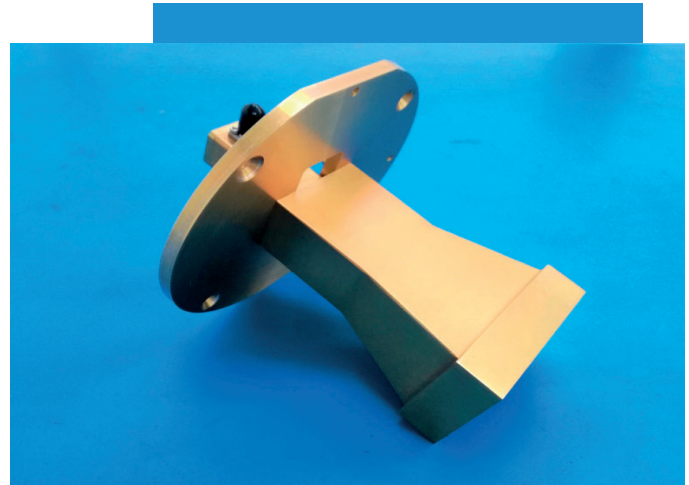
### Overview

Our standard gain horns are based on pyramidal waveguide horns. High accuracy design and manufacturing enables a symmetrical radiation pattern with very low cross-polarization and VSWR.

Horns are provided with integrated waveguide-to-coax adapters with SMA or K connectors up to 40 GHz and in standard rectangular waveguide flange output from 40 GHz. Standard gain horns are intended for wideband operation, covering all standard waveguide bands.

Custom frequency bands are available upon request.

Each horn includes high precision customized mounting interfaces with levels and absorber plates. A detailed calibration report would be available upon request, critical for anechoic chamber applications.



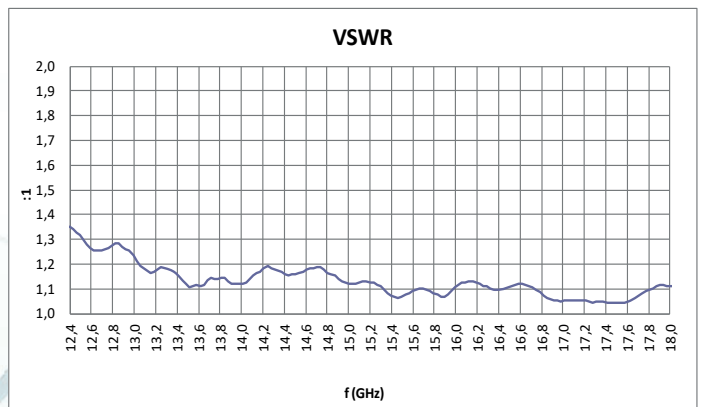
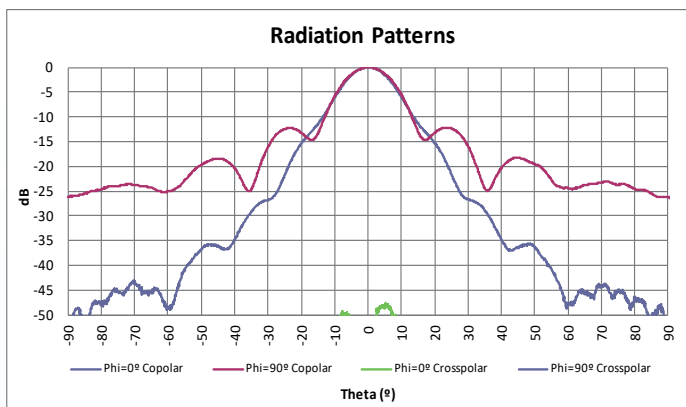
### Applications

- Antenna test range  
reference gain antennas
- Far-field antenna test  
range sources
- Polarization and channel  
balance calibration of  
Near-Field probes



# TECHNICAL SPECIFICATIONS

Product Code	Waveguide Band	Frequency Range [GHz]	VSWR	Gain [dBi] (At Center Frequency)	Crosspolar Discrimination [dB] (At Boresight)		Input/Output
					Target	Typical	
TTI-FEED-UHF-004007-SGH-A-V1	WR-1500	0.49 - 0.75	< 1.4:1	11.0 ± 0.5	> 40	> 38	SMA Connector
TTI-FEED-UHF-007011-SGH-A-V1	WR-975	0.75 – 1.10	< 1.4:1	14.0 ± 0.5	> 40	> 38	SMA Connector
TTI-FEED-L-011017-SGH-A-V1	WR-650	1.10 – 1.70	< 1.4:1	14.0 ± 0.5	> 40	> 38	SMA Connector
TTI-FEED-R-017026-SGH-A-V1	WR-430	1.70 – 2.60	< 1.4:1	17.0 ± 0.5	> 40	> 38	SMA Connector
TTI-FEED-S-026039-SGH-A-V1	WR-284	2.60 – 3.95	< 1.4:1	17.0 ± 0.5	> 40	> 38	SMA Connector
TTI-FEED-G-039058-SGH-A-V1	WR-187	3.95 – 5.85	< 1.4:1	20.0 ± 0.5	> 40	> 38	SMA Connector
TTI-FEED-C-058082-SGH-A-V1	WR-137	5.85 – 8.20	< 1.4:1	20.0 ± 0.5	> 40	> 38	SMA Connector
TTI-FEED-X-082124-SGH-A-V1	WR-90	8.20 – 12.40	< 1.4:1	23.0 ± 0.5	> 40	> 38	SMA Connector
TTI-FEED-Ku-124180-SGH-A-V1	WR-62	12.40 – 18.00	< 1.4:1	23.0 ± 0.5	> 40	> 38	SMA Connector
TTI-FEED-K-180265-SGH-A-V1	WR-42	18.00 – 26.50	< 1.4:1	23.0 ± 0.5	> 40	> 38	SMA Connector
TTI-FEED-KKa-220400-SGH-A-V1	WR-32	22.0 – 33.0	< 1.4:1	23.0 ± 0.5	> 40	> 38	K (2.92mm) Connector
TTI-FEED-Ka-265400-SGH-A-V1	WR-28	26.50 – 40.00	< 1.4:1	23.0 ± 0.5	> 40	> 38	K (2.92mm) Connector
TTI-FEED-U-400600-SGH-A-V1	WR-19	40.00 – 60.00	< 1.4:1	23.0 ± 0.5	> 40	> 38	UG-383/U Flange



Antenna Systems Solutions S.L.

Alber Eriksen 12

39011 Santander

Cantabria, Spain



Sales



WhatsApp



www.ttinorte.es

Rev. 1 07/19

Information contained in this document is subject to change without notice.

For more detailed information, please contact:



comercial@ttinorte.es



34 942 29 12 12



www.ttinorte.es