



Q band SSPA

12W/25W

Next Generation Q band SSPAs

Innovative Technology

State-of-the-art technology offering the very highest output power with wideband at Q band. Outstanding performance within a compact packaging.

Reliability and modularity

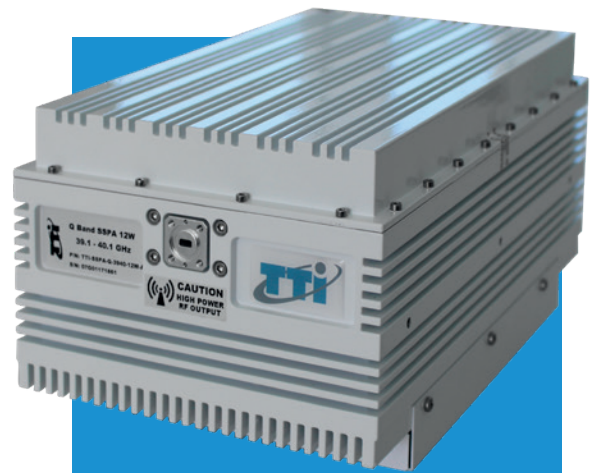
Reliable, versatile technology. Personalisation of internal configuration to attain different output powers. Combination of multiple SSPAs to achieve higher powers of output.

Applications

Intended for both broadcast satellite communications and laboratory load-pull applications. Designed for outdoor and indoor operation.

Monitoring & Control

Full M&C capability is provided with RS-485/USB (ASCII commands) and optionally via an Ethernet port (Telnet, HTTP with embedded web page or SNMP). Discrete lines for mute and turn on/off functionalities and a summary alarm (Form C relay and discrete) are in place for a quick operation.



Key Features

- Different output powers
- Satcom and load-pull applications
- Compact packaging
- Wideband
- Reliable and versatile technology



TECHNICAL SPECIFICATIONS

OPTIONS:

- Ethernet port (M&C)
- Extended temperature range (-40°C to +60°C)
- Redundant systems
- Remote M&C Panel

ELECTRICAL

Frequency band	39-47.5 GHz (1.5 GHz Sub-bands)
Output Power – Psat (typ) 12W / 25W	41 dBm / 44 dBm
Gain	>45 dB
Gain Flatness	3 dB p-p max over full band; 1dB p-p max over any 40MHz
Gain Variation over temperature	over temperature ± 1.5 dB over full operating range
Noise Figure (max)	10 dB
Input impedance and VSWR	<1.5:1
Output VSWR	<1.35:1. Open/short circuit loads without damage

POWER SUPPLY

Input Voltage	90-264 VAC, 50-60 Hz
Power Consumption @ Psat 12W / 25W	200W / 350W

MECHANICAL & INTERFACE

Dimensions (L x W x H) 12W / 25W	260 x 165 x 136 mm (10.2" x 6.5" x 5.4") / 340 x 210 x 197mm (13.4" x 8.3" x 7.8")
Weight 12W / 25W	12W / 25W 7 kg (< 15.4 lbs) / 17 kg (< 37.5 lbs)
Interfaces	RF Input: WR22 Grooved / Coaxial 2.4mm (f) RF Output : WR22 Grooved AC Line : 3pin Military Circular M&C : Serial RS-485 Local M&C (optional) : USB Connector

MONITOR & CONTROL PARAMETERS

Monitor parameters	Forward Power Detection, Temperature
Thermal shutdown control threshold	+ 85°C

ENVIRONMENTAL CHARACTERISTICS

Operating Temperature	-30°C to +55 °C
Storage Temperature	-40°C to +85°C
Humidity	100% condensing

Rev. 1 05/18

Information contained in this document is subject to change without notice.
For more detailed information, please contact:

 comercial@ttinorte.es  34 942 29 12 12  www.ttinorte.com