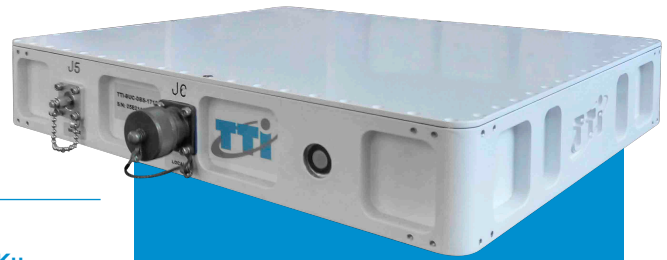




UP Converter KU Outdoor



Key Features

- Outdoor Operation
- Frequency bands:
Low or Standard Ku

Options

- Internal reference
- Ethernet
- Extended temperature range:
T1 (-40 °C to +55 °C)
T2 (-40 °C to +60 °C)
- Redundant configurations (1:1, 1:2)

Up converter module with different versions to operate in Ku band.

Designed to be installed close to outdoor GaN SSPA units. It provides information about input and output power levels as well as temperature of the module.

TECHNICAL SPECIFICATIONS

ELECTRICAL

Frequency range	Low Ku	Standard Ku
Input	950-1.450 Mhz	950-1700 Mhz
Output	12.75-13.25 GHz	13.75-14.5 GHz
Gain	30 dB	
Gain Flatness	<1 dB p-p	<1.5 dB p-p

Gain variation over temperature	±0.5 dB over full operating range
Attenuation Adjustment Range	20 dB in 0,25 dB step
Input VSWR	≤1.5:1
Output VSWR	≤1.3:1
P1dB	15 dBm
Spurious	-60 dBc max @ 5 dBm
Harmonics	≤60 dBc
Phase noise	-65 dBc/Hz at 100 Hz, -85 dBc/Hz at 1 kHz, -90 dBc/Hz at 10 Hz, -95 dBc/Hz at 100 kHz
External reference frequency and phase noise	10 MHz, 0 dBm ±5 dB (TX IF port multiplexed) -135 dBc/Hz at 100 Hz, -155 dBc/Hz at 1 kHz, -160 dBc/Hz at 10 Hz

POWER SUPPLY

Input Voltage	90-264 VAC, 50-60 Hz
Power Consumption	50 W

MECHANICAL & INTERFACES

Dimensions (L x W x H)	380 x 320 x 65 mm
Weight	7 kg
Interfaces	
RF Input	Type N
RF Output	SMA
Monitor Control	MIL-C-26482-I compatible, Size 14, 19 pins female
Power supply	MS3112E12-3P

MONITOR & CONTROL PARAMETERS

Remote control	RS-485 or Ethernet (option)
Hardware control	OL, Ref, Mute, Output detection (On/Off), Sum alarms
Monitor parameters	Input Power, Output Power, Temperature
Thermal shutdown control threshold	+85 °C

ENVIRONMENTAL

Operating Temperature	-30 °C to +55 °C
Storage Temperature	-40 °C to +85 °C
Humidity	100 %, condensing